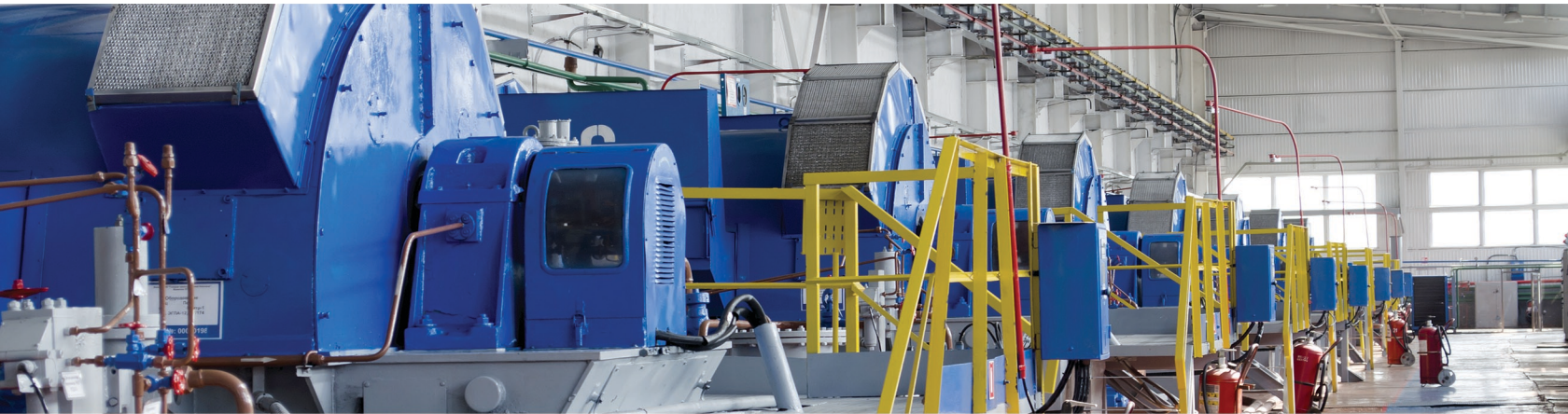


# MEG alert™

Safety By Choice  
Reliability By Design

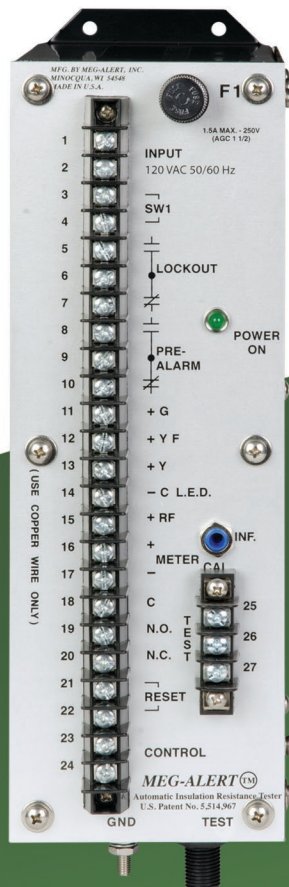
## MOTOR & GENERATOR PROTECTION

GP2500/5000-G-AS  
GP5000-G-HV-AS



# GEN guard™

- AC Synchronous Generators
- Hydro Generators
- Standby Generators



**Reduce Risk  
to Save Lives**



Automatic Insulation Resistance Tester that monitors and protects critical-duty generators



**FEATURES: Model GP2500-G-AS / GP5000-G-AS  
GP5000-G-HV-AS**

- Single Generator Model
- Auto/Manual test operation
- Adjustable alarm and pre-alarm set points
- Latching low-alarm contacts with manual reset
- Pre-alarm contacts with auto reset
- Fused input and H.V. test lead
- 15 ft. current limited HV test lead w/plug
- 2500 VDC/5000 VDC test voltage
- Calibration and system test switch
- Long-life, remote LED/switch assembly w/15 ft. cable
- Ground Interrupter safety interface
- 10 Year Warranty

**Optional Features**

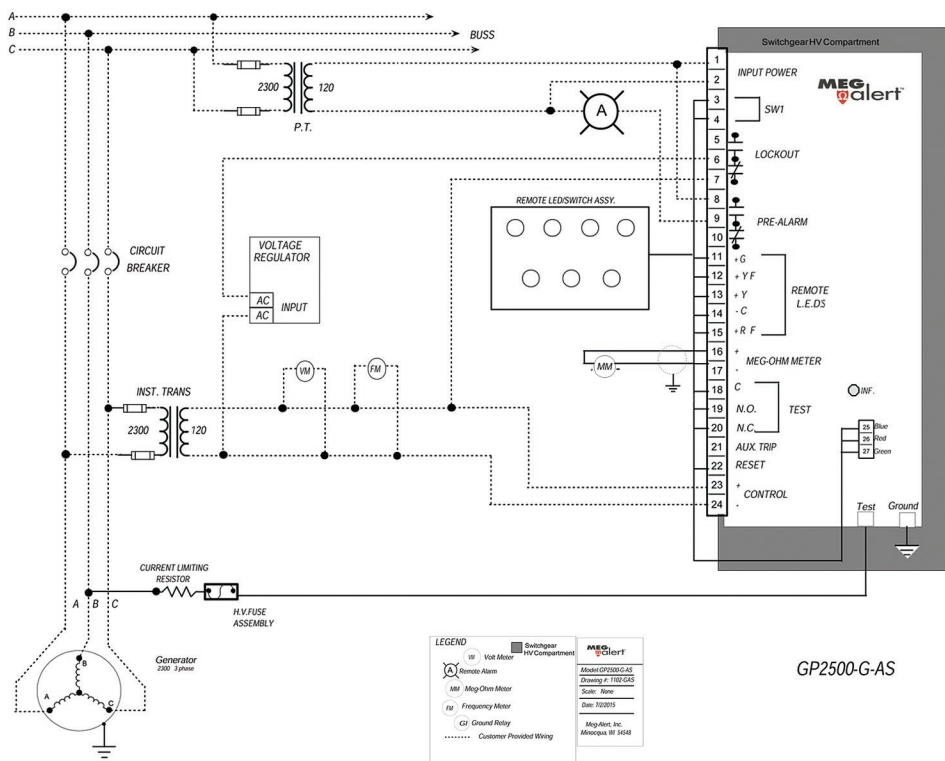
- Digital meter for RS232/485 Modbus or Ethernet protocols
- 4-20 mA transducer

**SPECIFICATIONS: Model GP2500-G-AS / GP5000-G-AS  
GP5000-G-HV-AS**

- Input Voltage: 120/240 VAC, 50/60 Hz
- Input Current: .15 A max @ 120 VAC
- Test Voltage: 2500/5000 VDC @ 350 µA max.
- Maximum Line Voltage: 7200 V RMS (HV-15 KV)
- Control Sensing: N/O Contact or 120 VAC, 50/60 Hz
- Alarm Time Delay: 0 - 2 Minutes
- Alarm/Lockout Contact: 1 Form C, 5A @ 240 VAC or 28 VDC
- Pre-Alarm Contact: 1 Form C, 5A @ 240 VAC or 28 VDC
- LED Display: Power On: Green  
Test On: Yellow  
Pre-Alarm: Yellow Flashing  
Alarm: Red Flashing
- Meter Output: 1% Analog Signal
- Temp: -20° F to 140° F
- Size: 12" H x 4" W x 8.5" D
- Weight: 4.8 lbs.
- Assembly: Meets UL 61010 specifications

**Operation:**

GenGuard applies a current limited, fixed DC voltage to the generator's windings during idle periods. On four wire neutral grounded systems the ground interrupter automatically opens the neutral ground while the GenGuard is testing the windings. The ground interrupter safety circuit will not allow the generator to operate unless the neutral ground is closed. A solid state comparator circuit monitors measured leakage current to ground. Two adjustable set points, factory preset to customer specifications, can be programmed to signal a pre-alarm, alarm and lockout the equipment from operating if the low set point is exceeded. The manual reset feature enables a return to operational status only after the alarm condition has been corrected. GenGuard will not impair normal operation of equipment being monitored.



**Typical Wiring Diagram**

In addition to a wide variety of standard in-stock systems, our engineers will work with you on custom applications. Call the factory for details.

8766 Frank Drive  
Minocqua, WI 54548 USA  
Sales & Service:  
1-855-825-SAFE (7233)  
Main:  
715-356-1499  
sales@megalert.com  
service@megalert.com  
www.MegaAlert.com

U.S. Patent 5,514,967 - Patents Pending